

**GENERAL NOTES:**

1. ALL FASTENERS SHALL BE IN ACCORDANCE WITH THESE DRAWINGS. SPECIFIED ANCHOR EMBED TO BASE MATERIAL SHALL BE BEYOND WALL FINISH OR STUCCO.
  2. OPENINGS, BUCKING & BUCKING FASTENERS MUST BE PROPERLY DESIGNED & INSTALLED TO TRANSFER WIND LOADS TO THE STRUCTURE.
  3. THESE NON-IMPACT RATED PRODUCT INSTALLATIONS ARE IN ACCORDANCE WITH AND MEET THE REQUIREMENTS OF THE FLORIDA BUILDING CODE (FBC).
  4. ALL ANCHORS SECURING PRODUCT FRAMES TO PRESSURE TREATED BUCKS OR WOOD FRAMING SHALL BE CAPABLE OF RESISTING CORROSION CAUSED BY THE PRESSURE TREATING CHEMICALS IN THE WOOD.
  5. MATERIALS, INCLUDING BUT NOT LIMITED TO STEEL SCREWS, THAT COME INTO CONTACT WITH OTHER DISSIMILAR MATERIALS SHALL MEET THE REQUIREMENTS OF FLORIDA BUILDING CODE CHAPTER 20.
  6. TO THE BEST OF OUR KNOWLEDGE, THE PRODUCT SHOWN HEREIN IS CERTIFIED & QUALITY ASSURED BY A FLORIDA STATE APPROVED CERTIFICATION/QA ENTITY & SHALL BE LABELED IN ACCORDANCE WITH THE FBC AND THE FLORIDA DEPARTMENT OF BUSINESS & PROFESSIONAL REGULATION SPECIFICATIONS. PRODUCT ASSEMBLY IS NOT PART OF THIS DRAWING AND SHALL BE IN ACCORDANCE WITH THE MANUFACTURER'S QUALITY ASSURANCE SPECIFICATIONS & TESTING REPORTS.
  7. CERTIFICATION OF THESE PRODUCT INSTALLATIONS SHALL BE CONSIDERED VOID IF ANY OF THE FOLLOWING APPLY: 1) PRODUCT IS INSTALLED WITHOUT A BUILDING PERMIT FROM THE APPLICABLE LOCAL BUILDING DEPARTMENT. 2) PRODUCT IS INSTALLED BY ANYONE OTHER THAN A LICENSED CONTRACTOR EXPERIENCED WITH INSTALLATIONS OF THIS TYPE OF PRODUCT. 3) IF CHANGES HAVE OCCURRED TO THE PRODUCT'S CERTIFICATION ENTITY'S CERTIFICATE THAT CAUSE THESE INSTALLATIONS TO BE INCORRECT OR INCONSISTENT WITH WHAT HAS BEEN TESTED.
  8. THE LEAST DESIGN PRESSURE SPECIFIED EITHER IN THIS DRAWING OR IN THE PRODUCTS CERTIFICATION SHALL CONTROL FOR THE INSTALLED PRODUCT.
  9. THESE DRAWINGS CERTIFY THE PRODUCT INSTALLATION ONLY. WATER PROOFING OF THE INSTALLED PRODUCT IS NOT PART OF THIS INSTALLATION CERTIFICATION. THAT RESPONSIBILITY SHALL BE THAT OF THE MANUFACTURER &/OR INSTALLER.
- INSTALLATION EVALUATION IS BASED ON APPLICABLE ANCHOR STANDARDS AND/OR INFORMATION & RESULTS FROM APPLICABLE TEST REPORTS. THE FLORIDA BUILDING CODE VERSION CONSIDERED WITH THE EVALUATION WAS THAT IN FORCE AT THE TIME OF THE EVALUATION. IN THE EVENT OF CODE VERSION CHANGES/UPDATES OR IN THE EVENT THAT NEW OR ADDITIONAL TESTING IS COMPLETED ON THE REFERENCED PRODUCT, PRIOR TO STATING CODE COMPLIANCE WITH THE STATE, THE MANUFACTURER SHALL CONFIRM WITH THE INSTALLATION EVALUATION ENGINEER OF RECORD THAT THE INSTALLATIONS SPECIFIED HERE-IN ARE CURRENT WITH THE THEN CURRENT TESTING, CODE AND APPLICABLE STANDARDS.

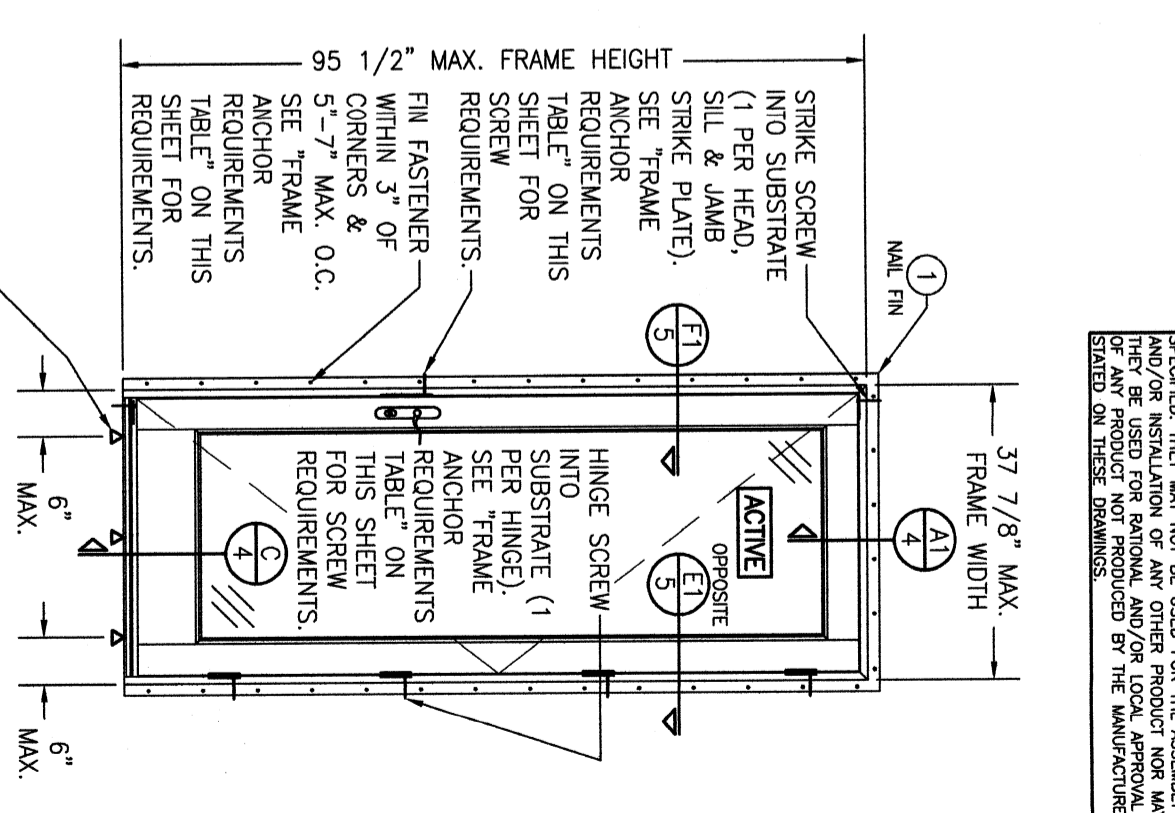
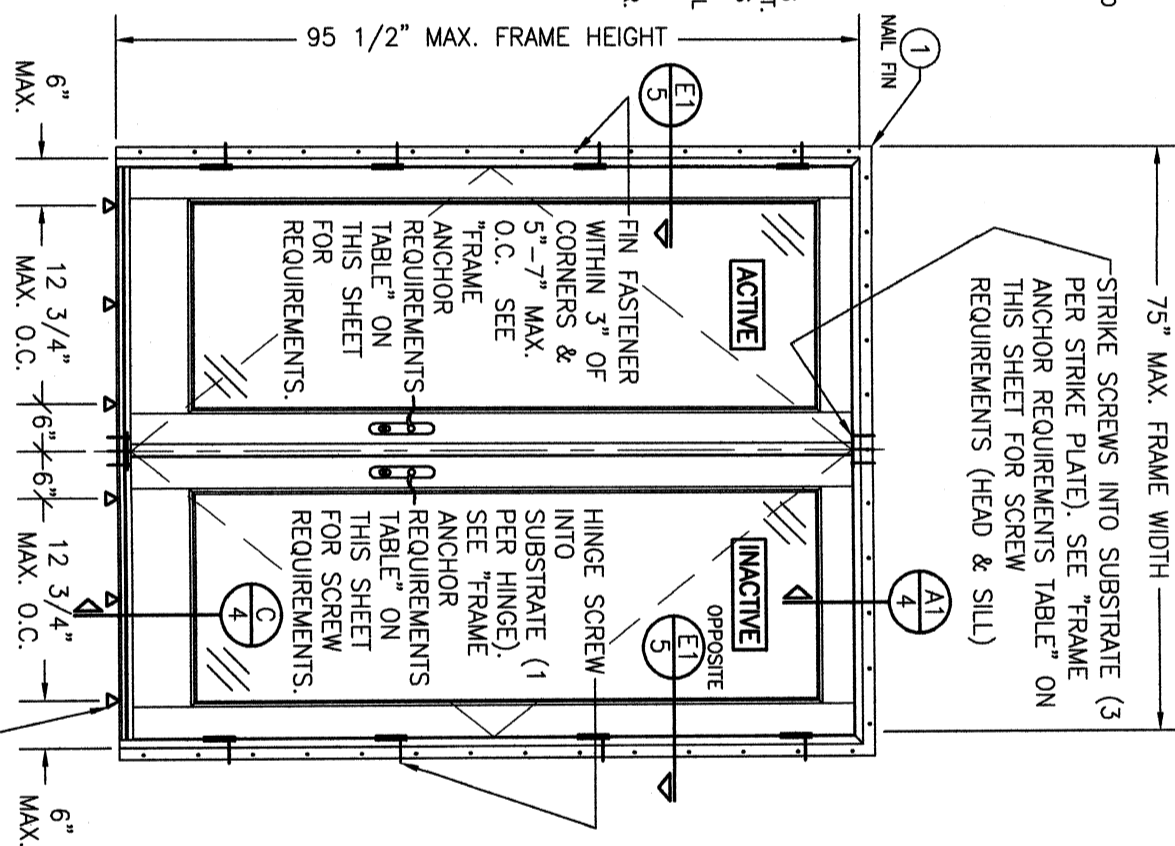
**FRAME ANCHOR REQUIREMENTS TABLE**

OPENING TYPE (SUBSTRATE)	FRAME/CLIP/NAIL FIN/HINGE/STRIKE TO OPENING FASTENER TYPE	MINIMUM EMBED	MINIMUM EDGE DIST.
<b>FRAME/SILL SCREWS</b>			
(4) MIN. 2X6 WOOD FRAME OR BUCK (MIN. GR. 3 & G=0.55)	NO. 10 SMS OR WOOD SCREW	1 1/4"	3/4"
MIN. 18 GA. 33 KSI METAL STUD	NO. 10 GR. 5 SELF TAP/DRILL SCREW	FULL	1/2"
MIN. 1/8" THK A36 STEEL	NO. 10 GR. 5 SELF TAP/DRILL SCREW	FULL	1/2"
MIN. 1/8" THK 6063-T5 ALUM.	NO. 10 GR. 5 SELF TAP/DRILL SCREW	FULL	1/2"
C-90 CMU/2500 PSI CONCRETE	(1) 1/4" CONCRETE SCREW	1 1/4"	2"
<b>INSTALLATION CLIP SCREWS (STANDARD BENT CONDITION)</b>			
(4) MIN. 2X6 WOOD FRAME OR BUCK (MIN. GR. 3 & G=0.55)	NO. 8 X 1 1/2" SMS	1 3/8"	(3) N/A
MIN. 1/8" THK A36 STEEL	NO. 8 GR. 5 SELF TAP/DRILL SCREW	FULL	(3) N/A
MIN. 1/8" THK 6063-T5 ALUM.	NO. 8 GR. 5 SELF TAP/DRILL SCREW	FULL	(3) N/A
<b>(3) INSTALLATION STRAIGHT CONDITION</b>			
(4) MIN. 2X6 WOOD FRAME OR BUCK (MIN. GR. 3 & G=0.55)	NO. 8 X 1 1/2" SMS	1 3/8"	3/4"
MIN. 18 GA. 33 KSI METAL STUD	NO. 8 GR. 5 SELF TAP/DRILL SCREW	FULL	1/2"
MIN. 1/8" THK A36 STEEL	NO. 8 GR. 5 SELF TAP/DRILL SCREW	FULL	1/2"
MIN. 1/8" THK 6063-T5 ALUM.	NO. 8 GR. 5 SELF TAP/DRILL SCREW	FULL	1/2"
<b>(2) NAILING FIN FASTENERS</b>			
(4) MIN. 2X6 WOOD FRAME OR BUCK (MIN. GR. 3 & G=0.55)	NO. 8 SMS SCREW	1 3/8"	1/2"
(4) MIN. 2X6 WOOD FRAME OR BUCK (MIN. GR. 3 & G=0.55)	11 GA. ROOFING NAIL	1 3/8"	1/2"
MIN. 1/8" THK A36 STEEL	NO. 8 GR. 5 SELF TAP/DRILL SCREW	FULL	1/2"
MIN. 1/8" THK 6063-T5 ALUM.	NO. 8 GR. 5 SELF TAP/DRILL SCREW	FULL	1/2"
<b>HINGE &amp; STRIKE SCREWS</b>			
(4) MIN. 2X6 WOOD FRAME OR BUCK (MIN. GR. 3 & G=0.55)	NO. 8 SMS OR WOOD SCREW	1 1/4"	3/4"
MIN. 18 GA. 33 KSI METAL STUD	NO. 8 GR. 5 SELF TAP/DRILL SCREW	FULL	1/2"
MIN. 1/8" THK A36 STEEL	NO. 8 GR. 5 SELF TAP/DRILL SCREW	FULL	1/2"
MIN. 1/8" THK 6063-T5 ALUM.	NO. 8 GR. 5 SELF TAP/DRILL SCREW	FULL	1/2"
C-90 CMU/2500 PSI CONCRETE	(1) 3/16" CONCRETE SCREW	1 1/4"	2"

EDGE DISTANCE MAY BE DECREASED TO 1/2" IF SCREWS ARE ANGLED 15 TO 20 DEGREES AWAY FROM THE EDGE.

**INSTALLATION NOTE:**  
WHEN NECESSARY, INSTALLATION METHODS MAY BE MIXED WITH ANY ONE WINDOW SUCH THAT INDIVIDUAL SIDES OF THE WINDOW MAY USE ONE OR THE OTHER ANCHOR METHOD (EXAMPLE: SILL MAY USE FRAME SCREWS METHOD WHILE OTHER SIDES USE FIN)

**ANCHOR/SUBSTRATE EVALUATION NOTE:**  
ALL ANCHORS IN THEIR SPECIFIED SUBSTRATES HAVE BEEN ANALYZED IN ACCORDANCE WITH THEIR APPLICABLE STANDARD(S) AND ARE FOUND TO BE CAPABLE OF SUPPORTING ALL LOADS IMPOSED ON THEM UNDER THE GUIDELINES OF THIS DOCUMENT. ANY SUBSTRATES OR CONDITIONS OUTSIDE OF WHAT IS SHOWN HERE-IN SHALL BE SUBJECT TO JOB SPECIFIC ENGINEER'S REVIEW & CERTIFICATION.



**ALLOWABLE DESIGN PRESSURE**

(\"XX\", \"X\", \"X0\" & \"OX\" DOORS)	+55/-55 PSF
(\"O\" DOORS)	+55/-70 PSF

**HINGE REQUIREMENTS**

FRAME QUANTITY	4
HEIGHT PER PANEL	83 1/2\"
OVER 83 1/2\" AND LESS	3

DRAWING NO. <b>1853</b>	SHEET NO. <b>7</b>	REV. <b>B</b>	DATE <b>03/04/13</b>	BY <b>W.W.S.</b>	DATE <b>11/17/16</b>
				NO. <b>A1</b>	REVISION DESCRIPTION <b>UPDATE TO CURRENT STANDARDS</b>
			BY <b>W.W.S.</b>	DATE <b>06/05/23</b>	
			NO. <b>B1</b>	REVISION DESCRIPTION <b>UPDATE TO NEW TESTING</b>	

DRAWN BY: **W.W.S.** CHECKED BY: **W.W.S.**

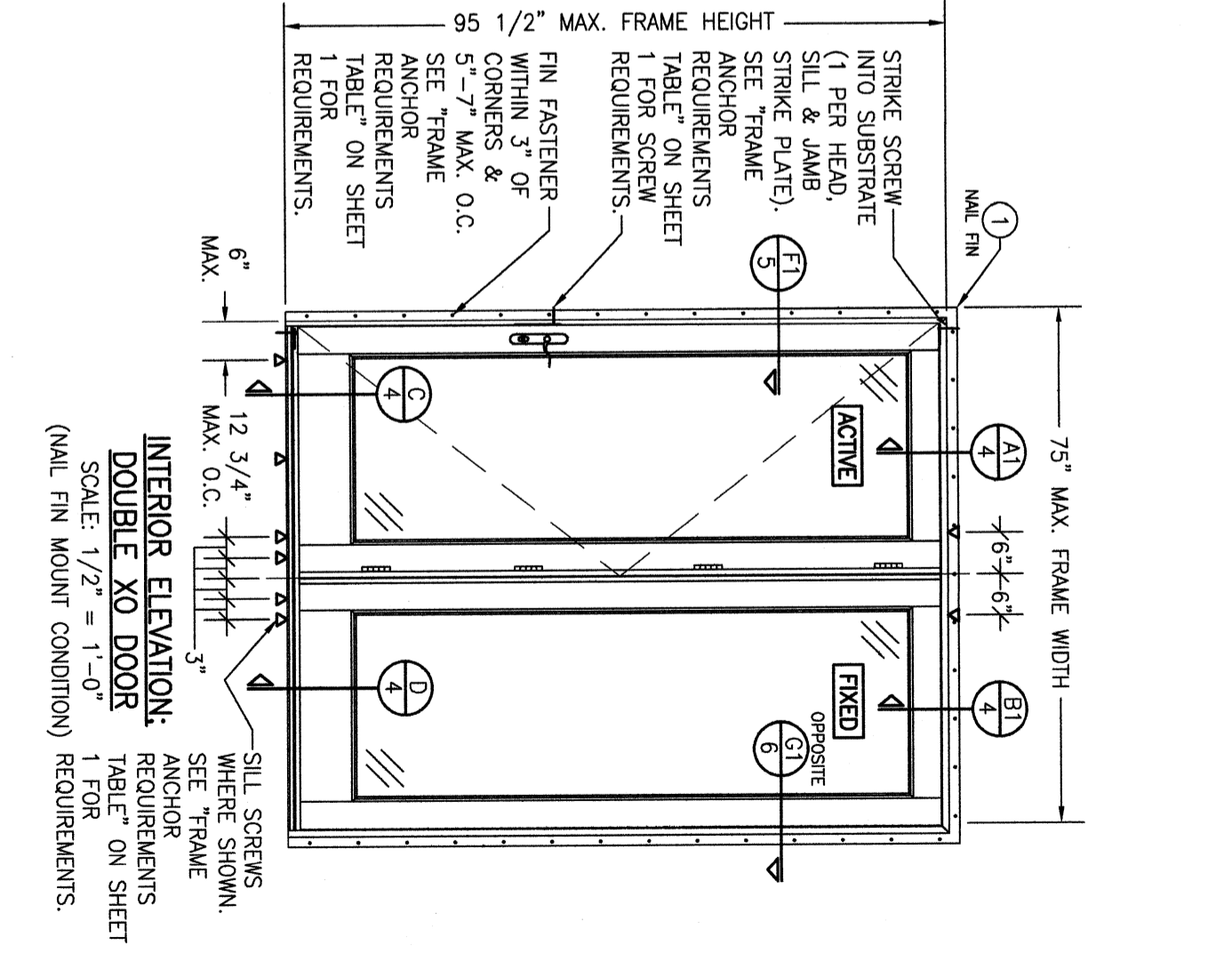
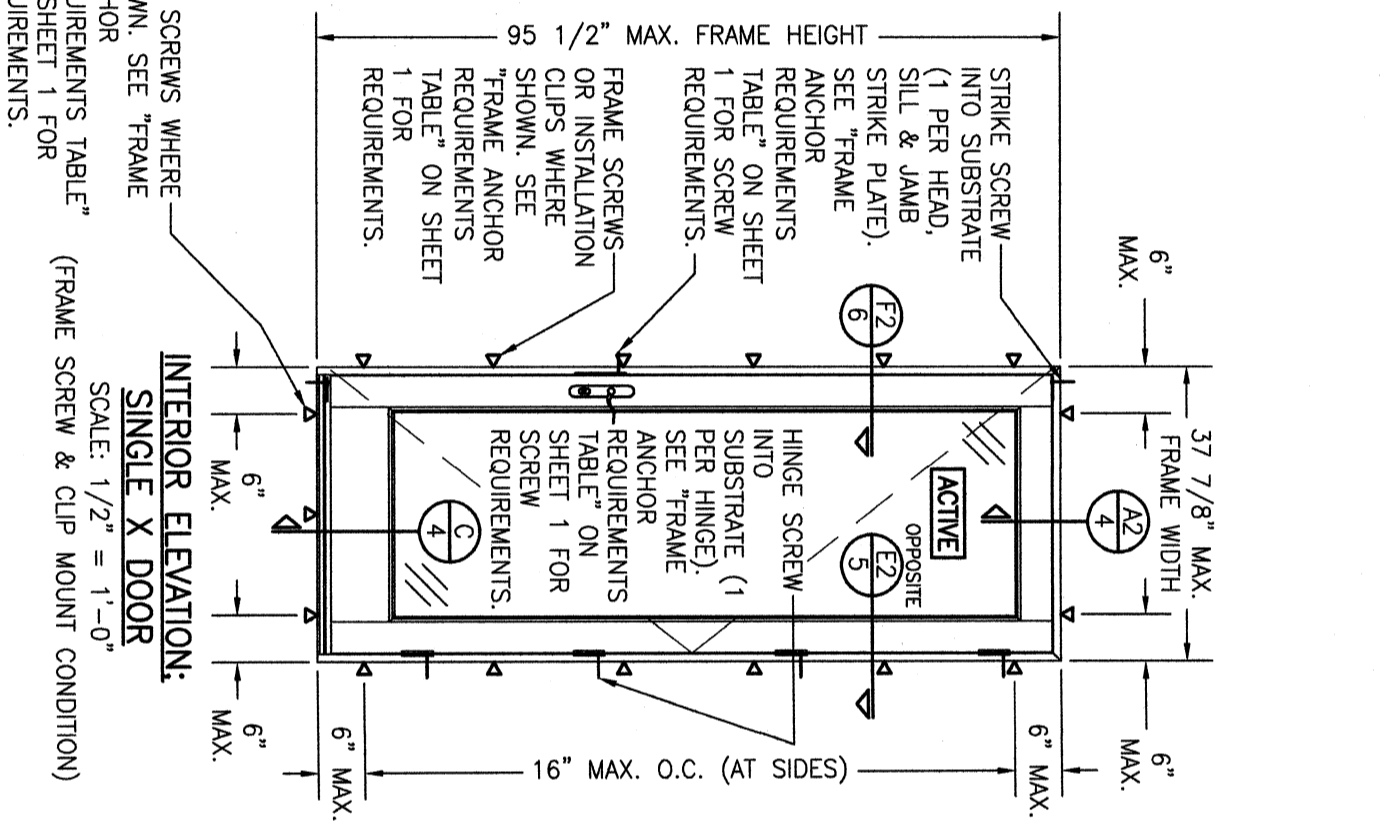
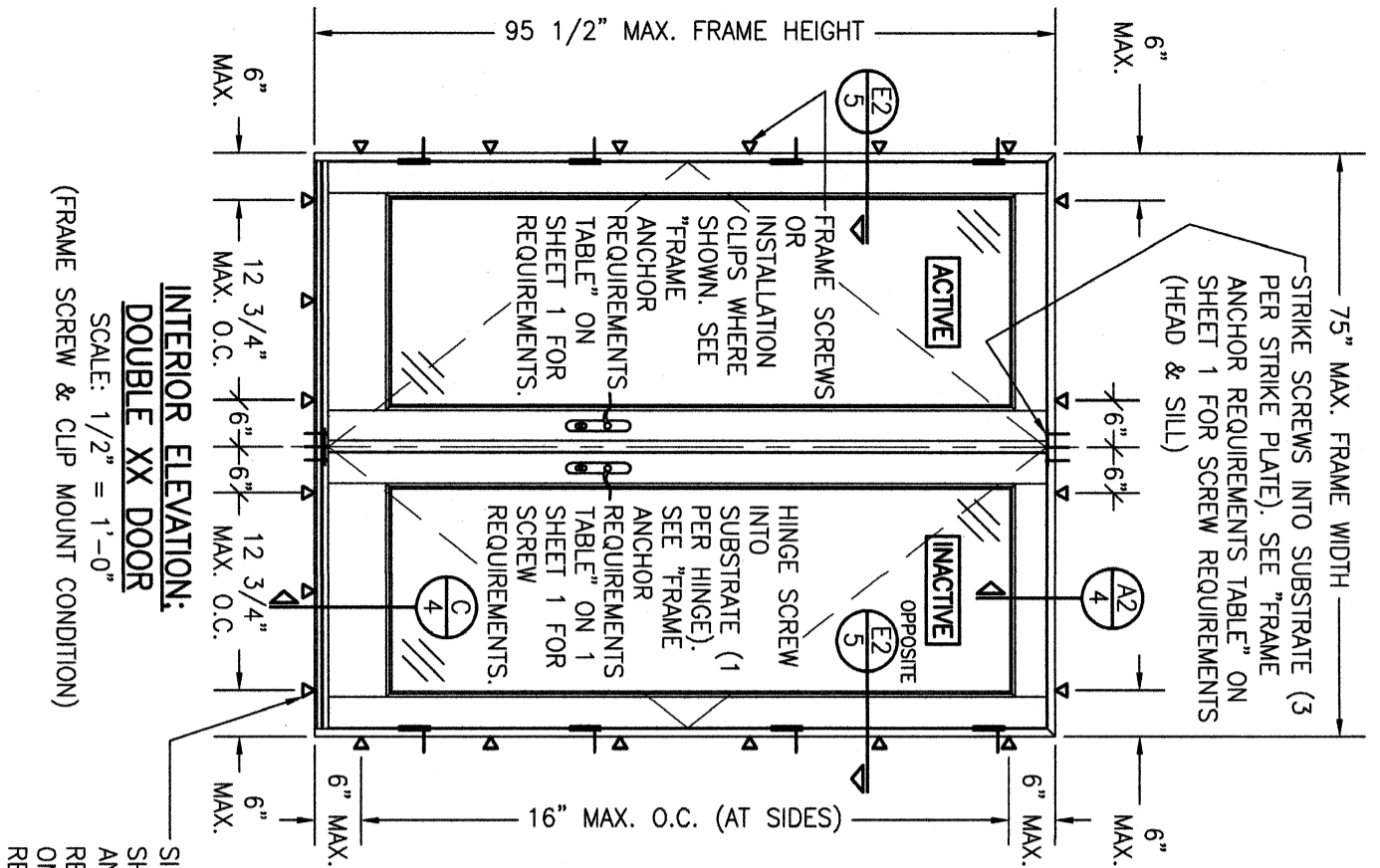
DRAWING TITLE: **LIFESTYLE WITH HGP SERIES MODEL 2 NON-IMPACT CLAD IN-SWING DOOR**

CONSULTANTS: **W. W. SCHAEFER ENGINEERING & CONSULTING, P.A.**  
26376 NADIR ROAD, UNIT 309  
PUNTA GORDA, FL 33983  
PHONE: 561-744-3424

MANUFACTURER: **PELLA CORPORATION**  
102 MAIN STREET  
PELLA, IA 50219

CERTIFICATION: **WARREN W. SCHAEFER, P.E.**  
P.E. NO. 44135

THESE DRAWINGS ARE APPLICABLE ONLY TO THE PRODUCT SPECIFIED. THEY MAY NOT BE USED FOR THE ASSEMBLY AND/OR INSTALLATION OF ANY OTHER PRODUCT NOR MAY THEY BE USED FOR RATIONAL AND/OR LOCAL APPROVAL OF ANY PRODUCT NOT PRODUCED BY THE MANUFACTURER STATED ON THESE DRAWINGS.



**INTERIOR ELEVATION:  
DOUBLE XX DOOR**  
SCALE: 1/2" = 1'-0"  
(FRAME SCREW & CLIP MOUNT CONDITION)


**INTERIOR ELEVATION:  
SINGLE X DOOR**  
SCALE: 1/2" = 1'-0"  
(FRAME SCREW & CLIP MOUNT CONDITION)

**INTERIOR ELEVATION:  
DOUBLE XO DOOR**  
SCALE: 1/2" = 1'-0"  
(NAIL FIN MOUNT CONDITION)

NO.	REVISION	DESCRIPTION	BY	DATE

**DRAWING TITLE** LIFESTYLE WITH HGP SERIES MODEL 2 NON-IMPACT CLAD IN-SWING DOOR

**CONSULTANTS**  
W. W. SCHAEFER ENGINEERING & CONSULTING, P.A.  
26376 NADIR ROAD; UNIT 309  
PUNTA GORDA, FL 33983  
PHONE: 561-744-3424

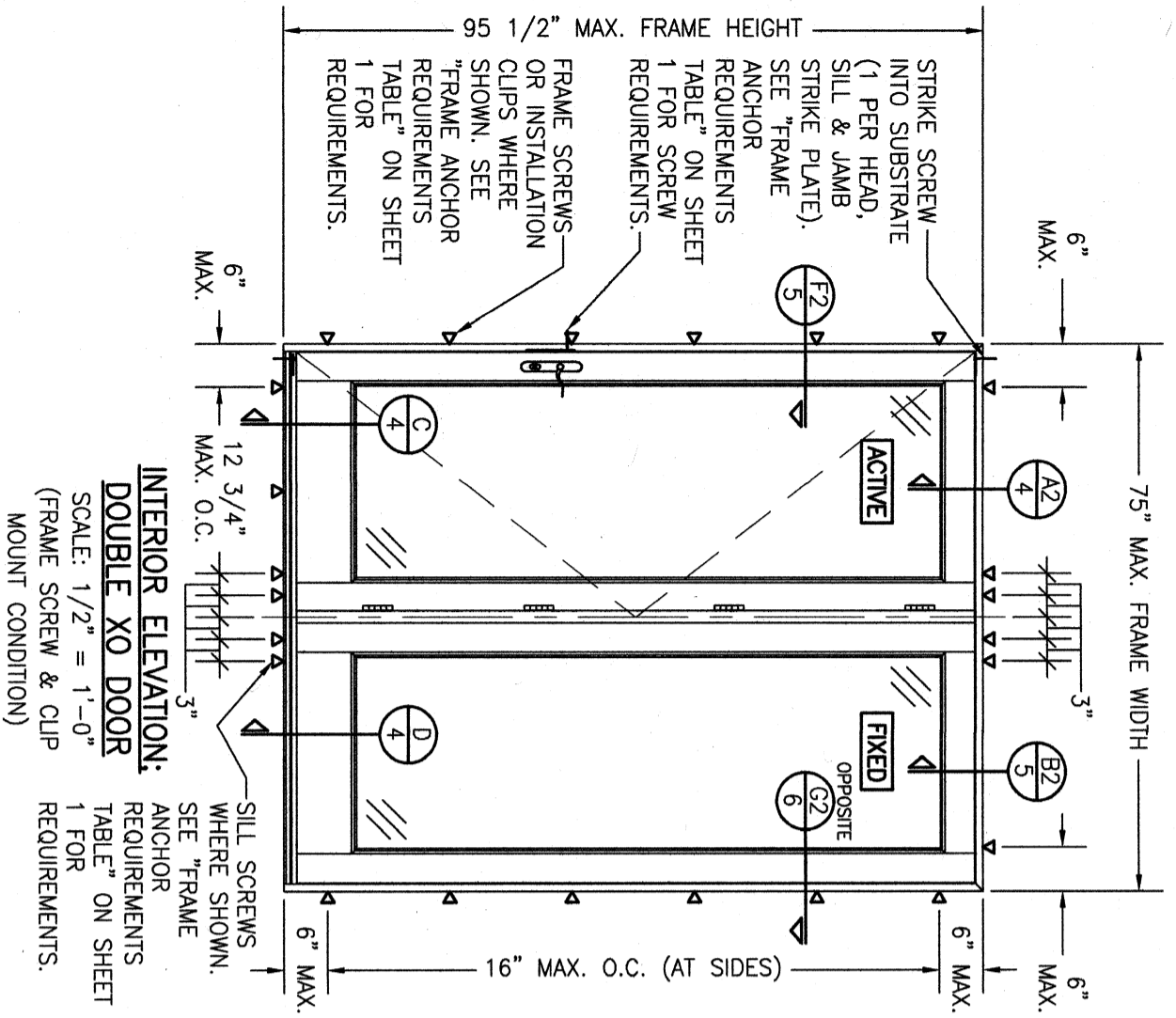
**MANUFACTURER**  
 PELLA CORPORATION  
102 MAIN STREET  
PELLA, IA 50219  
641-621-1000

**CERTIFICATION**

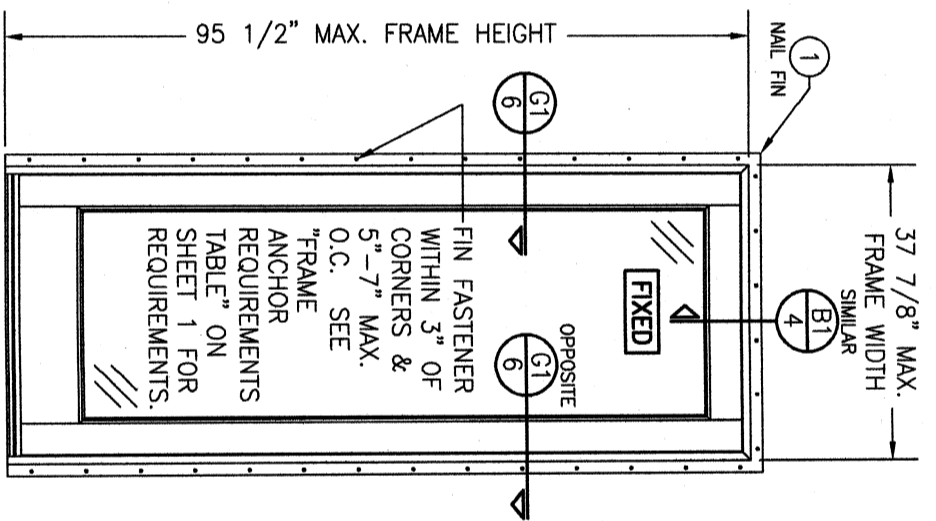
WARREN W. SCHAEFER, P.E.  
P.E. NO. 44135

**DRAWING NO.** 1853  
**REV.** A  
**SHEET NO.** 2 OF 7

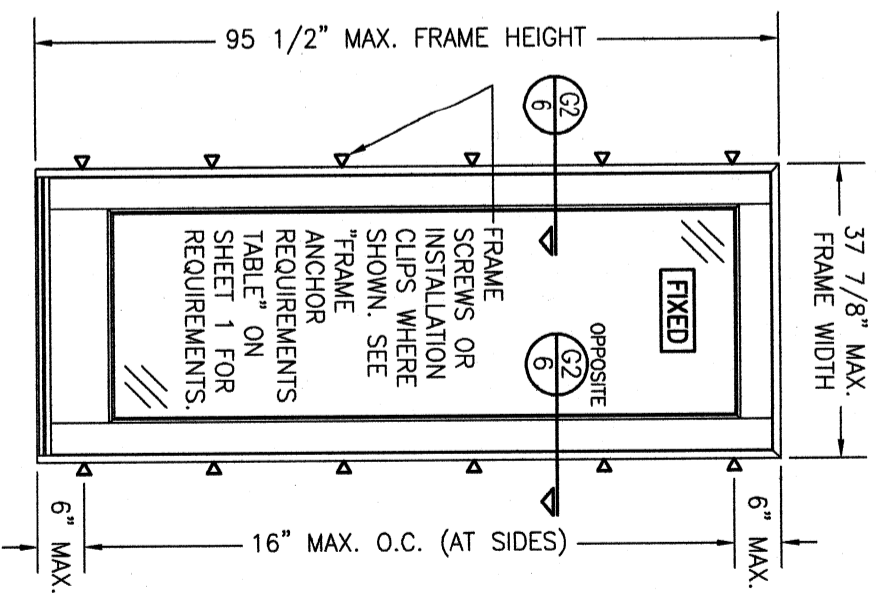
**DRAWN BY:** W.M.M.  
**CHECKED BY:** W.M.S.  
**DATE:** 03/04/13



**INTERIOR ELEVATION:  
DOUBLE XO DOOR**  
SCALE: 1/2" = 1'-0"  
(FRAME SCREW & CLIP  
MOUNT CONDITION)




**INTERIOR ELEVATION:  
SINGLE FIXED PANEL DOOR**  
SCALE: 1/2" = 1'-0"  
(NAIL FIN MOUNT CONDITION)



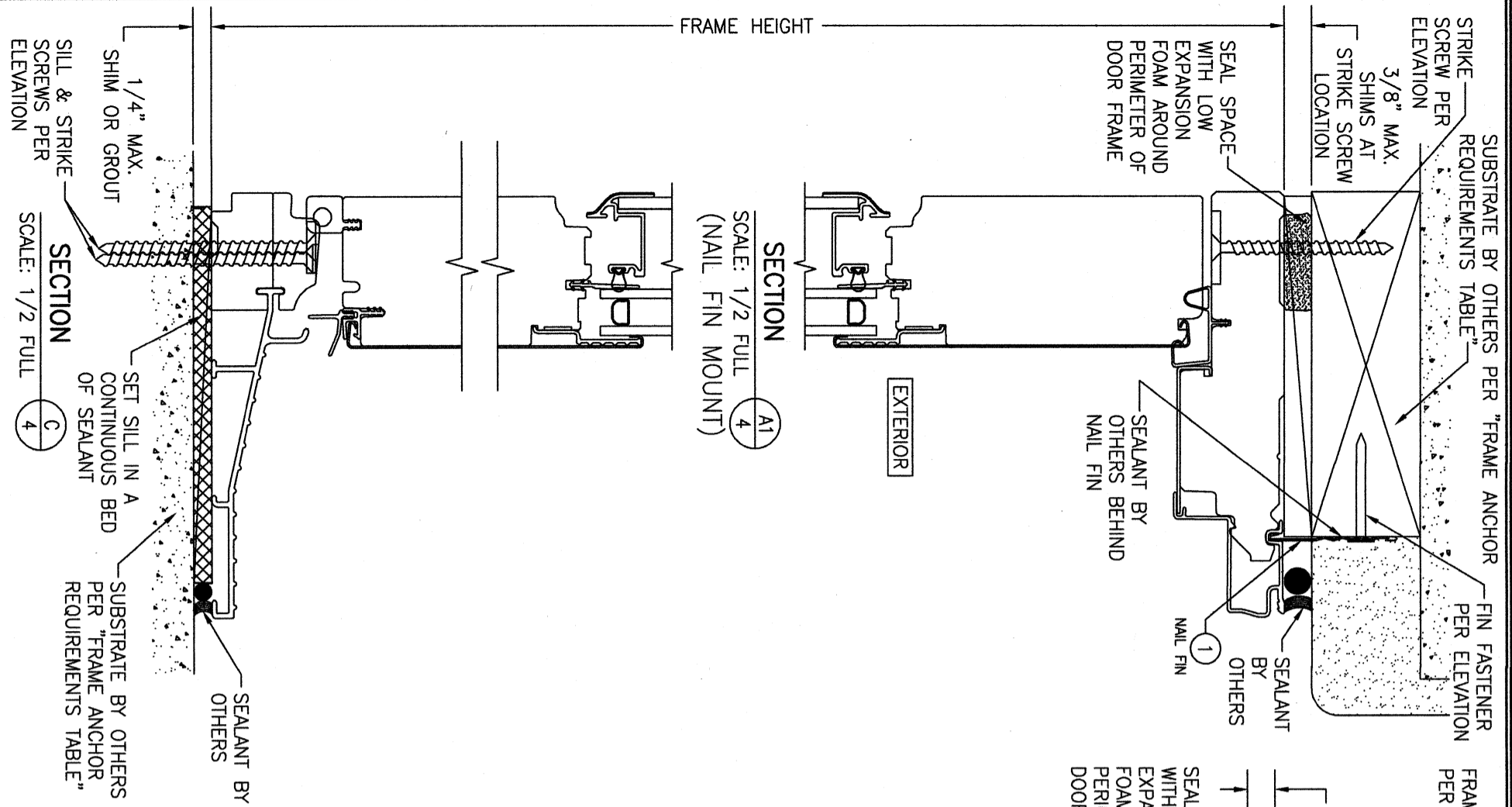
**INTERIOR ELEVATION:  
SINGLE FIXED PANEL DOOR**  
SCALE: 1/2" = 1'-0"  
(FRAME SCREW & CLIP MOUNT CONDITION)

NO.	REVISION DESCRIPTION	BY	DATE

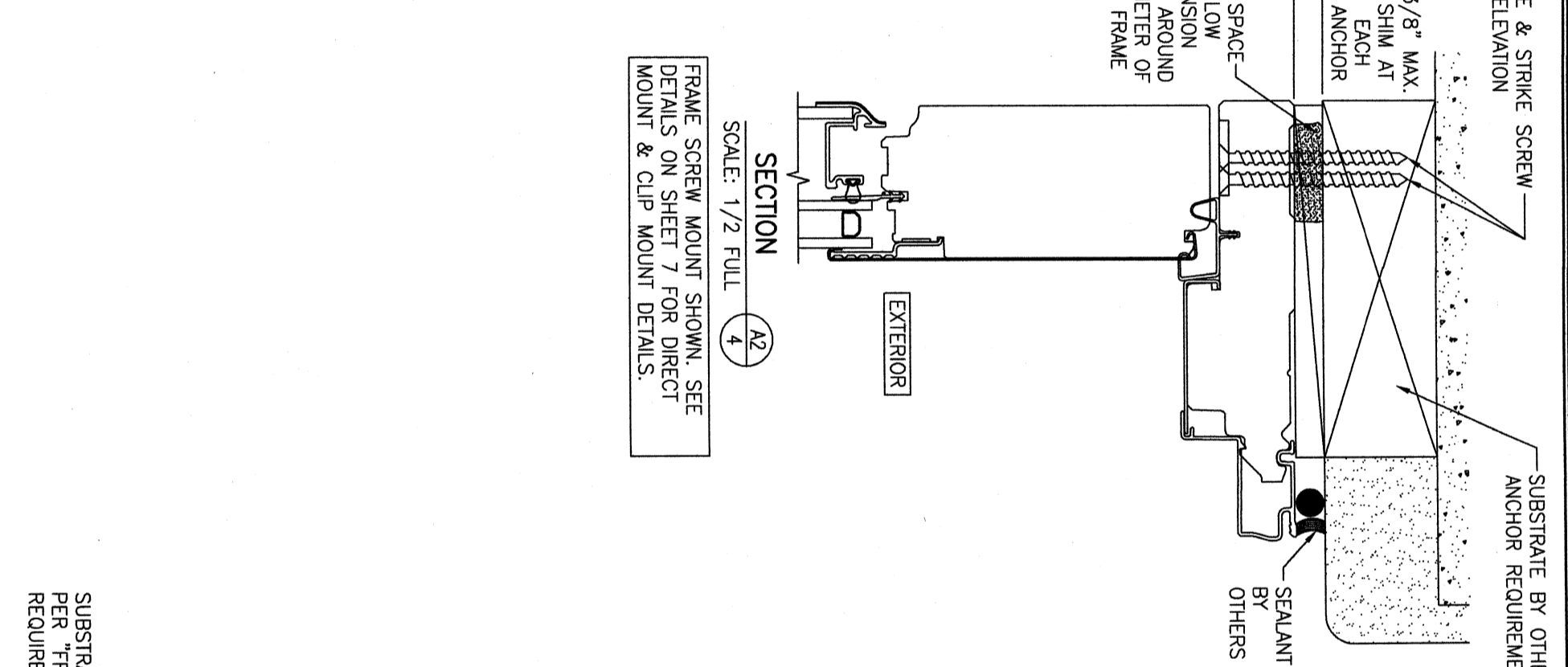
DRAWING TITLE <b>LIFESTYLE WITH HGP SERIES MODEL 2 NON-IMPACT CLAD IN-SWING DOOR</b>		MANUFACTURER  <b>PELLA CORPORATION</b> 102 MAIN STREET PELLA, IA 50219 641-621-1000	
CONSULTANTS <b>W. W. SCHAEFER ENGINEERING &amp; CONSULTING, P.A.</b> 26376 NADIR ROAD, UNIT 309 PUNTA GORDA, FL 33983 PHONE: 561-744-3424		CHECKED BY: W.S.M. DATE: 03/04/13	

CERTIFICATION	WARREN W. SCHAEFER, P.E. P.E. NO. 44135
---------------	--

DRAWING NO. REV. <b>1853 B</b>	SHEET NO. <b>3 OF 7</b>
-----------------------------------	----------------------------

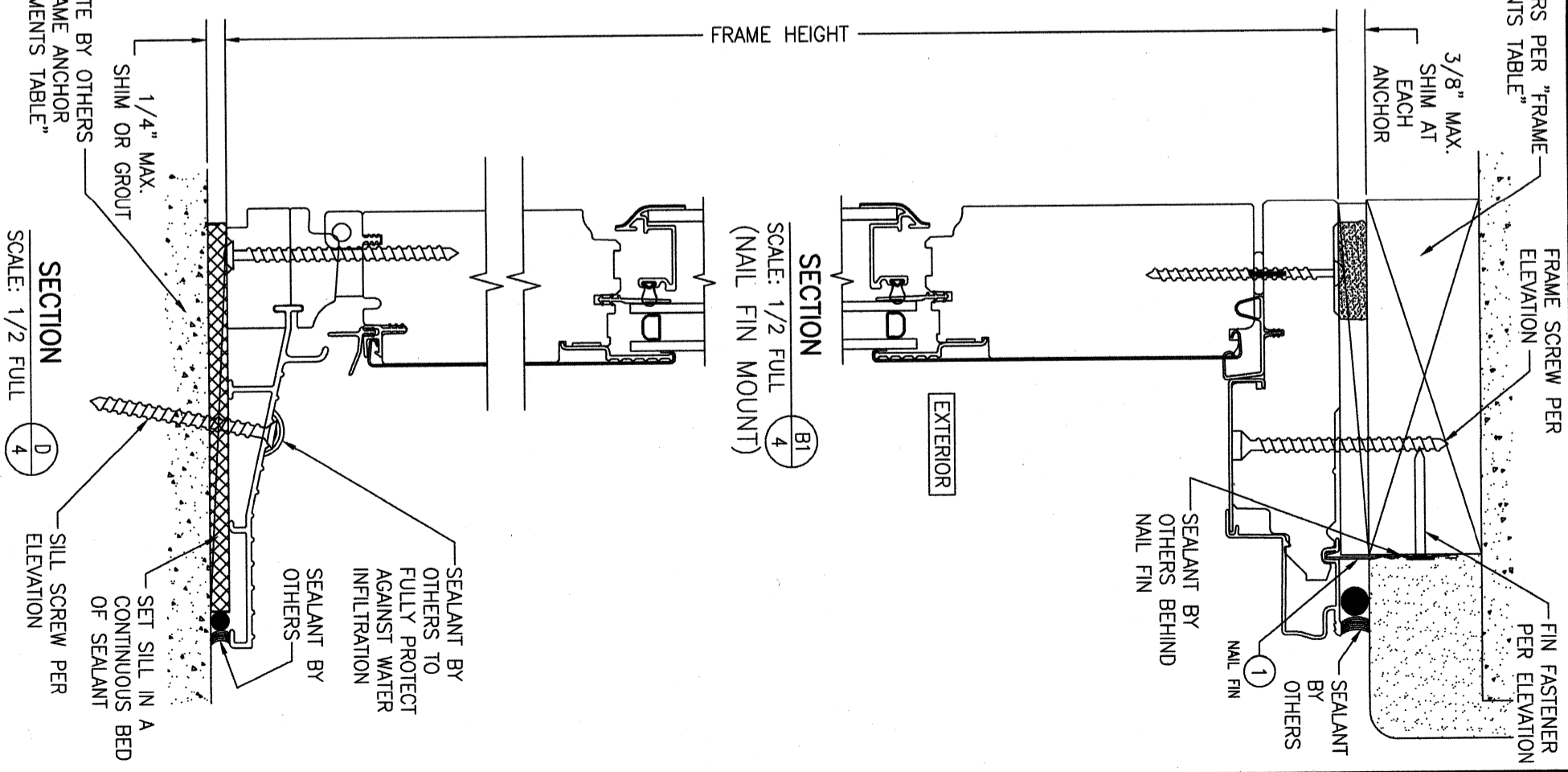


SECTION A1  
SCALE: 1/2 FULL  
(NAIL FIN MOUNT)



SECTION A2  
SCALE: 1/2 FULL  
(NAIL FIN MOUNT)

FRAME SCREW MOUNT SHOWN. SEE DETAILS ON SHEET 7 FOR DIRECT MOUNT & CLIP MOUNT DETAILS.

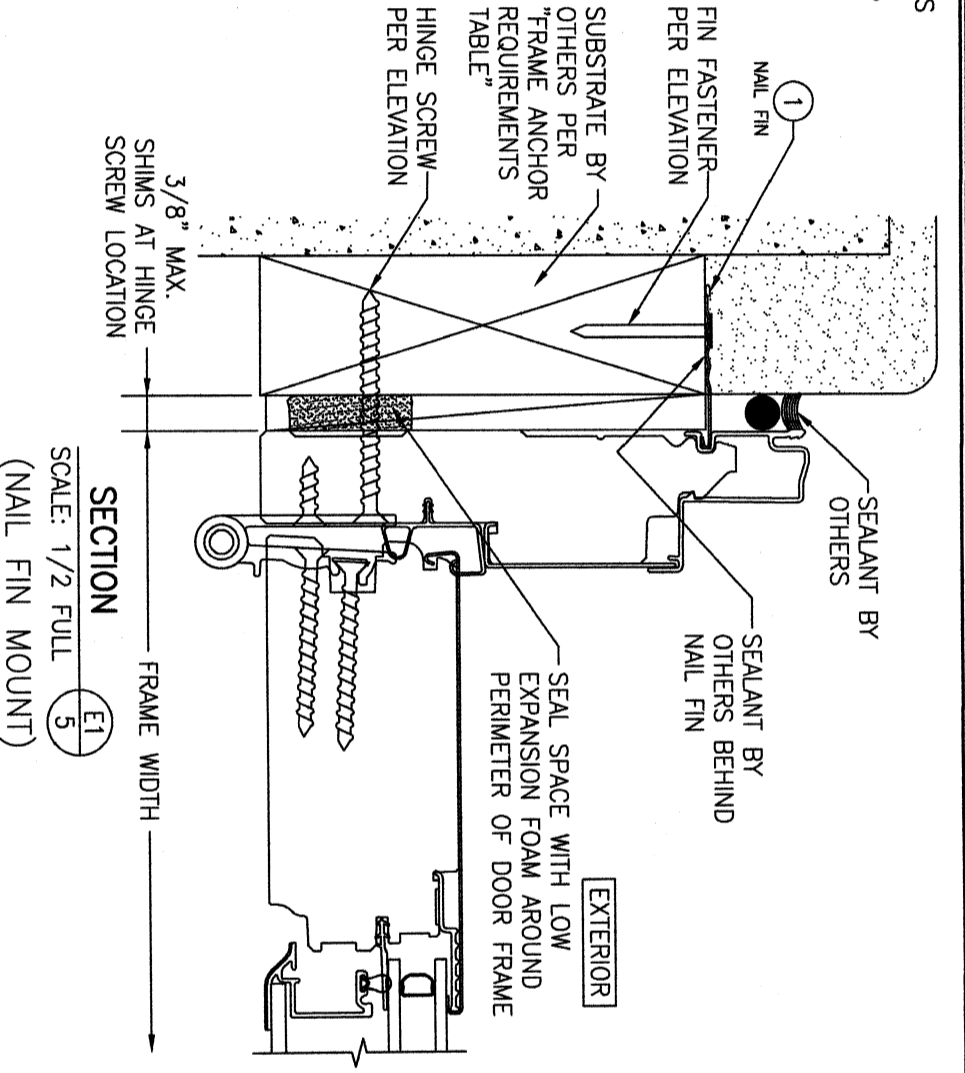
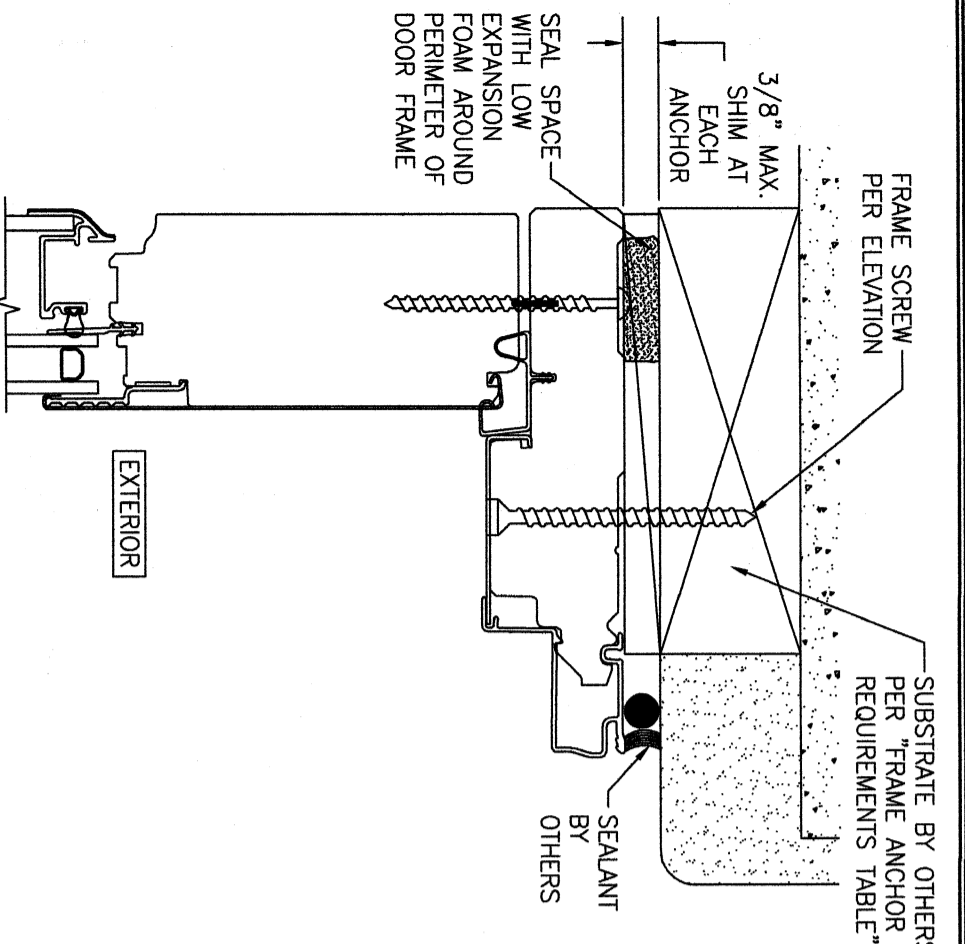


SECTION B1  
SCALE: 1/2 FULL  
(NAIL FIN MOUNT)

<p>CERTIFICATION</p> <p>WARREN W. SCHAEFER, P.E. P.E. NO. 44135</p>	<p>DRAWING TITLE: LIFESTYLE WITH HGP SERIES MODEL 2 NON-IMPACT CLAD IN-SWING DOOR</p> <p>CONSULTANTS: W. W. SCHAEFER ENGINEERING &amp; CONSULTING, P.A. 26376 NADIR ROAD, UNIT 309 PUNTA GORDA, FL 33983 PHONE: 561-744-3424</p>	<p>MANUFACTURER: Pella CORPORATION 102 MAIN STREET PELLA, IA 50219 641-621-1000</p>	<table border="1" style="width: 100%; border-collapse: collapse;"> <thead> <tr> <th>NO.</th> <th>REVISION</th> <th>DESCRIPTION</th> <th>BY</th> <th>DATE</th> </tr> </thead> <tbody> <tr> <td>1-2</td> <td></td> <td></td> <td></td> <td></td> </tr> </tbody> </table>	NO.	REVISION	DESCRIPTION	BY	DATE	1-2				
NO.	REVISION	DESCRIPTION	BY	DATE									
1-2													

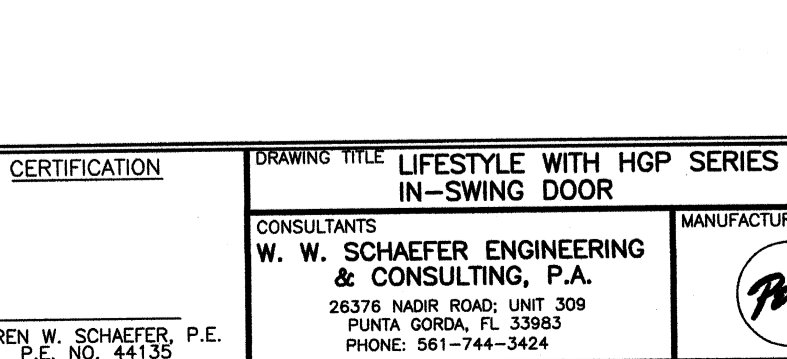
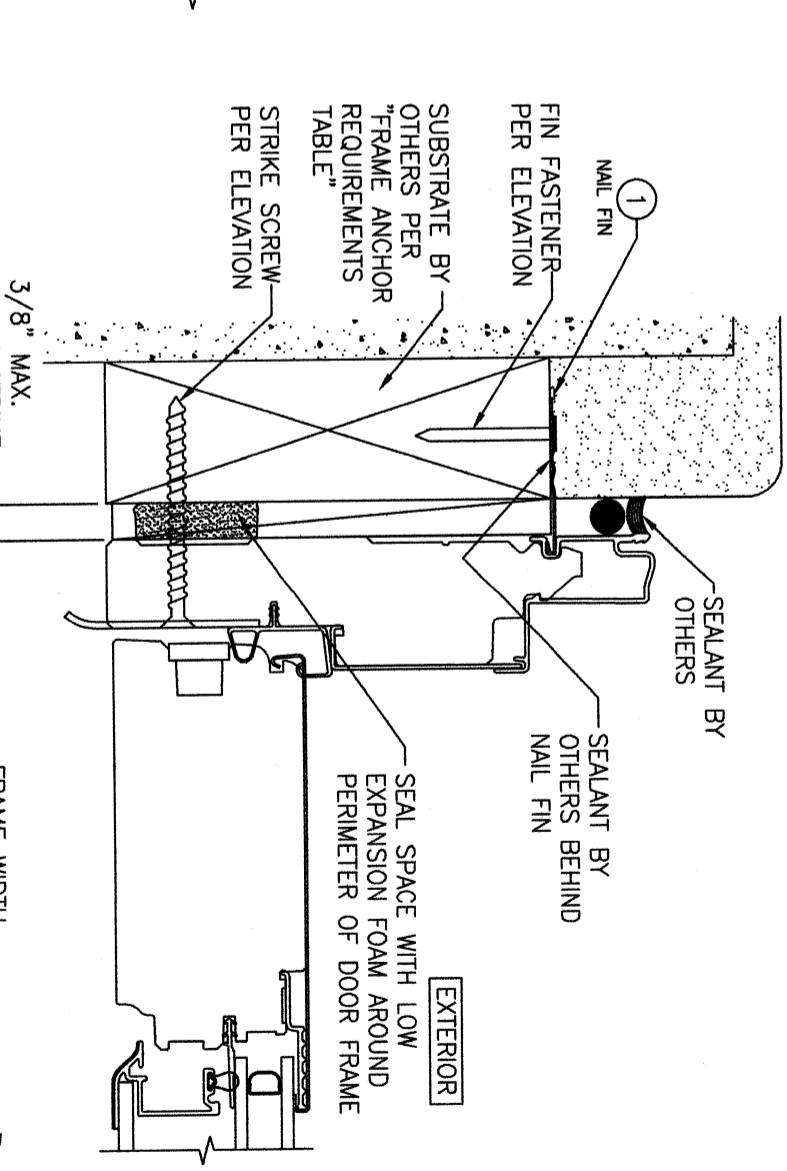
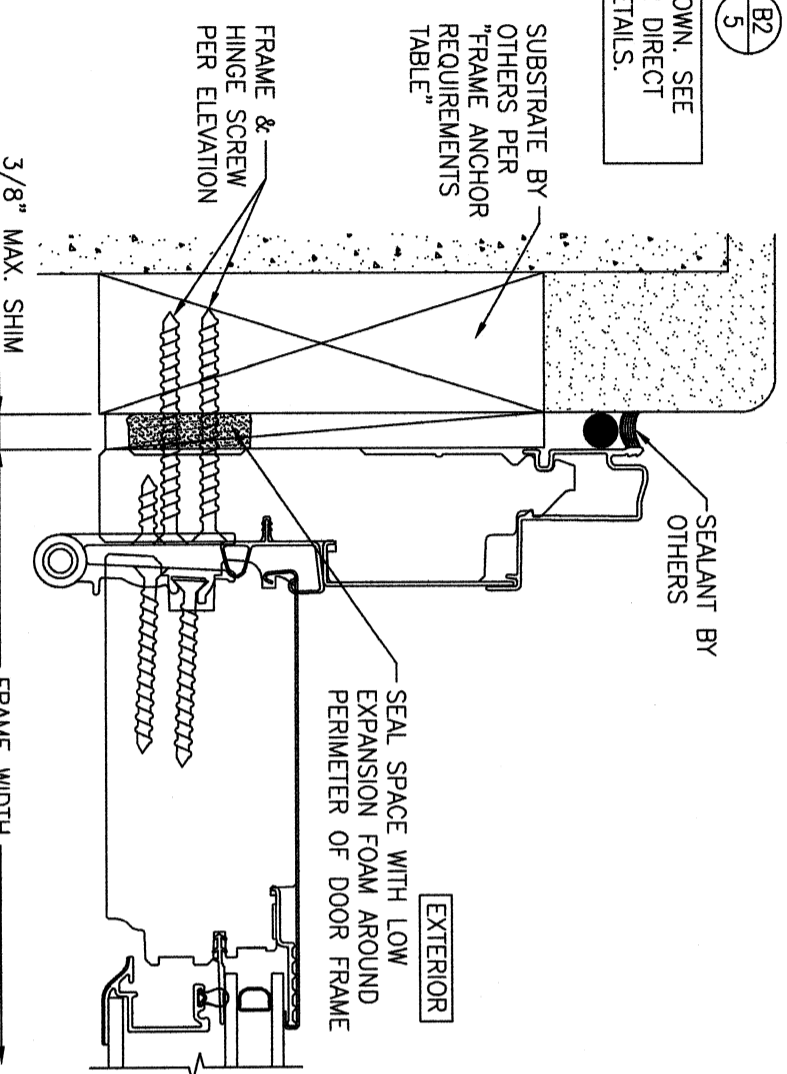
DRAWN BY: W.W.S.  
CHECKED BY: W.W.S.  
DATE: 03/04/13

DRAWING NO.: 1853  
SHEET NO.: 4 OF 7



FRAME SCREW MOUNT SHOWN, SEE DETAILS ON SHEET 7 FOR DIRECT MOUNT & CLIP MOUNT DETAILS.

FRAME SCREW MOUNT SHOWN, SEE DETAILS ON SHEET 7 FOR DIRECT MOUNT & CLIP MOUNT DETAILS.



NO.	REVISION	DESCRIPTION	BY	DATE
1-2				03/04/13

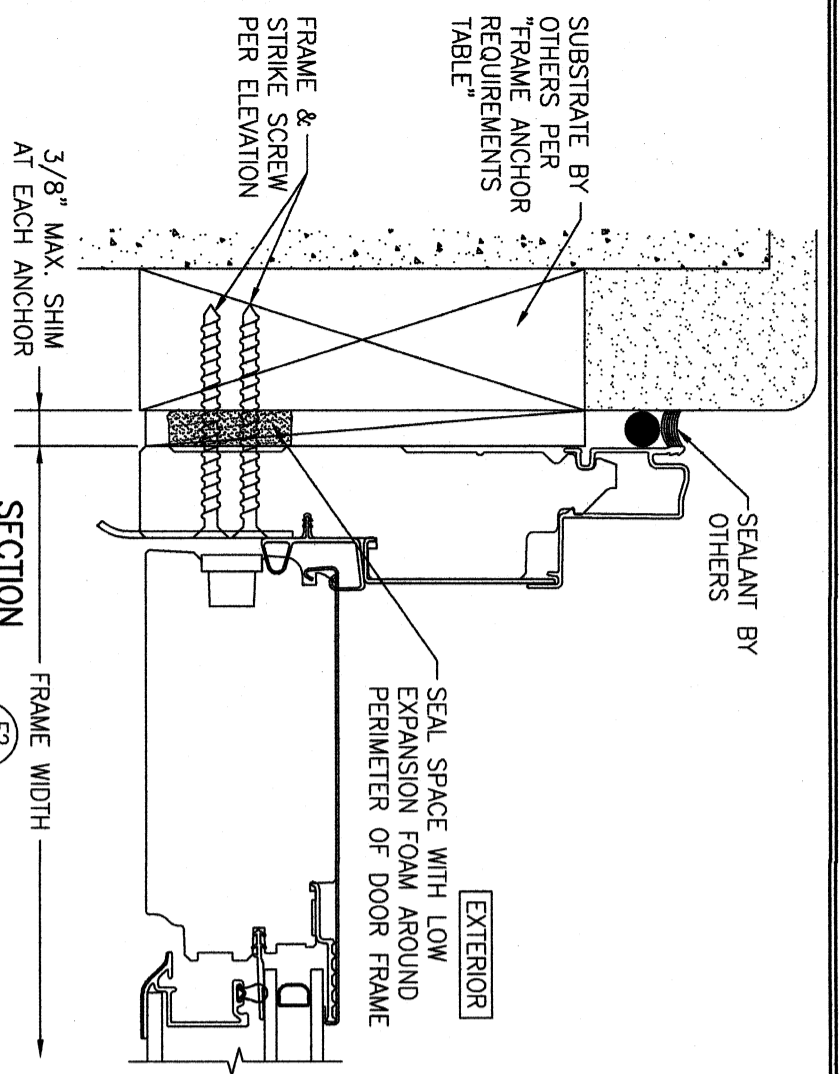
**CONSULTANTS**  
**W. W. SCHAEFER ENGINEERING & CONSULTING, P.A.**  
 26376 NADIR ROAD, UNIT 309  
 PUNTA GORDA, FL 33983  
 PHONE: 561-744-3424

**MANUFACTURER**  
**PELLA CORPORATION**  
 102 MAIN STREET  
 PELLA, IA 50219  
 641-621-1000

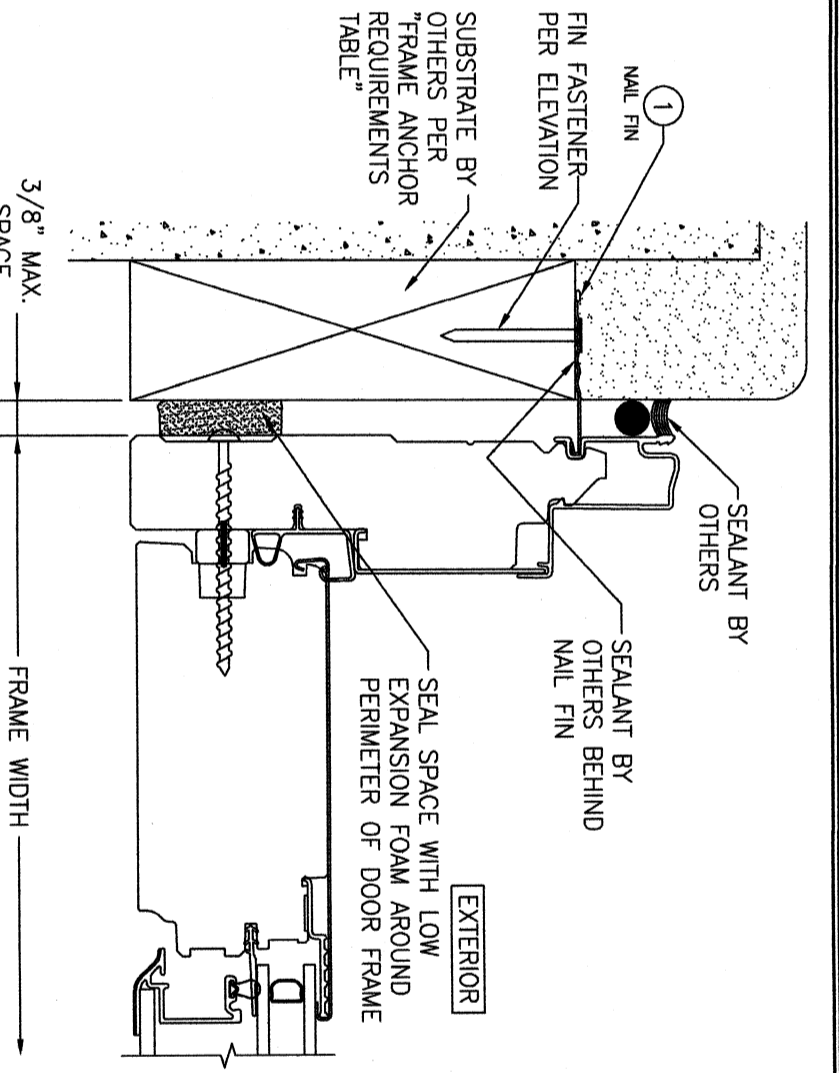
**DRAWING TITLE**  
**LIFESTYLE WITH HGP SERIES MODEL 2 NON-IMPACT CLAD IN-SWING DOOR**

**CERTIFICATION**  
 WARREN W. SCHAEFER, P.E.  
 P.E. NO. 44135

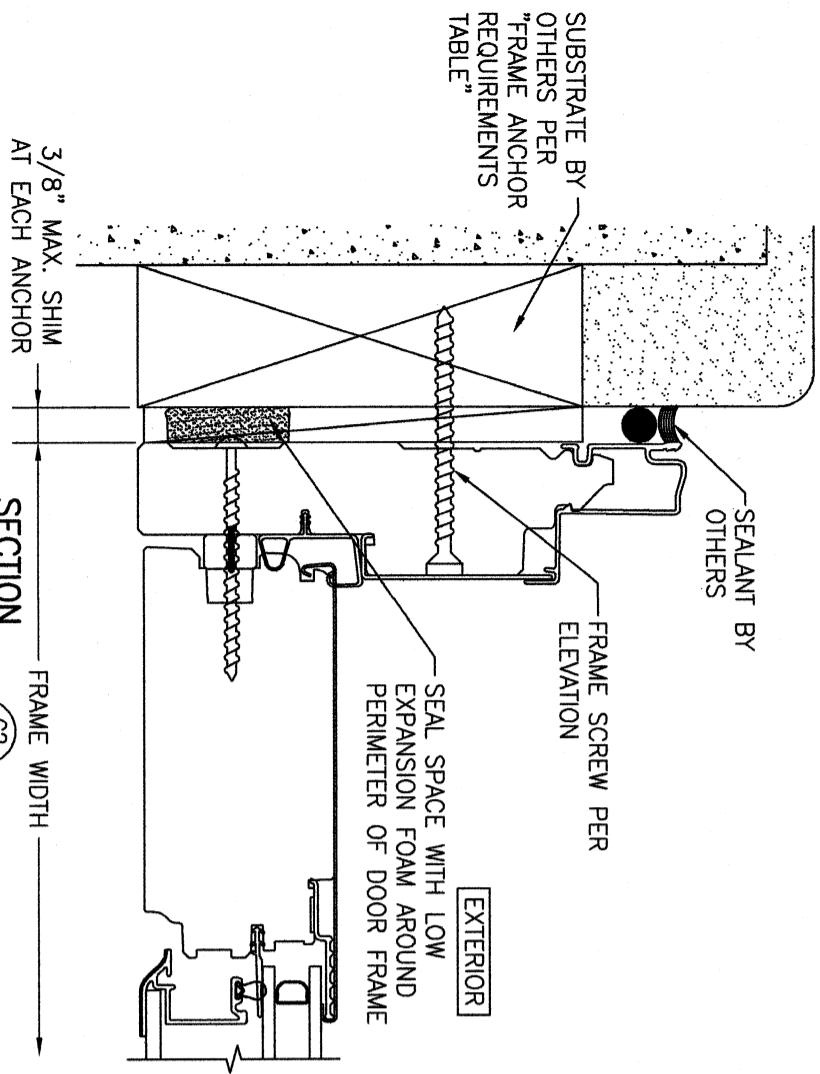
**DRAWING NO.**  
 1853  
**SHEET NO.**  
 5 OF 7



SECTION F2  
SCALE: 1/2 FULL  
FRAME SCREW MOUNT SHOWN. SEE DETAILS ON SHEET 7 FOR DIRECT MOUNT & CLIP MOUNT DETAILS.



SECTION G1  
SCALE: 1/2 FULL  
(NAIL FIN MOUNT)



SECTION G2  
SCALE: 1/2 FULL  
FRAME SCREW MOUNT SHOWN. SEE DETAILS ON SHEET 7 FOR DIRECT MOUNT & CLIP MOUNT DETAILS.

NO.	REVISION	DESCRIPTION	BY	DATE

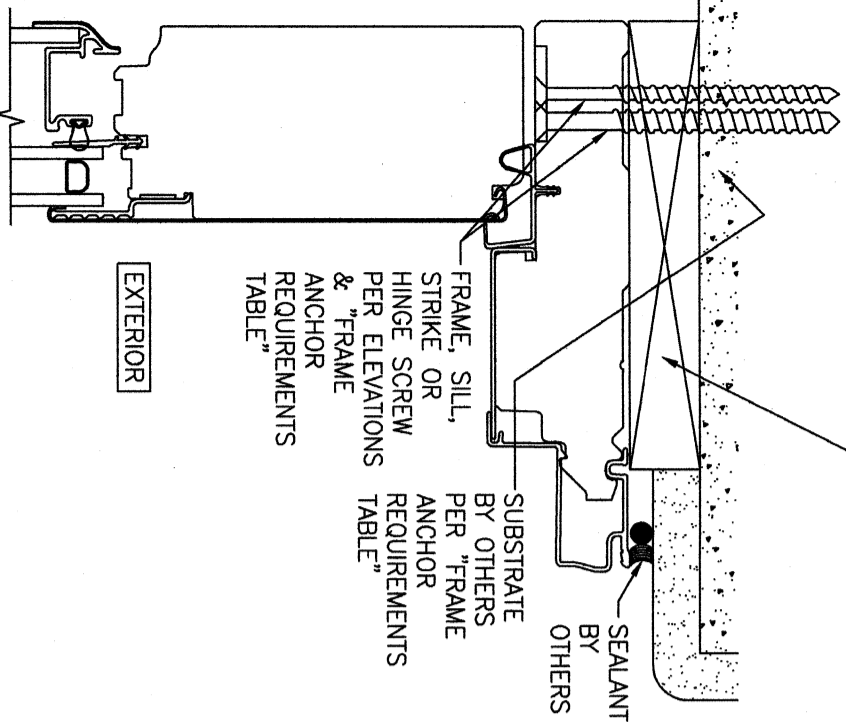
MANUFACTURER  
**PELLA CORPORATION**  
 102 MAIN STREET  
 PELLA, IA 50219  
 641-621-1000

CONSULTANTS  
**W. W. SCHAEFER ENGINEERING & CONSULTING, P.A.**  
 26376 MADIR ROAD, UNIT 309  
 PUNTA GORDA, FL 33983  
 PHONE: 561-744-3424

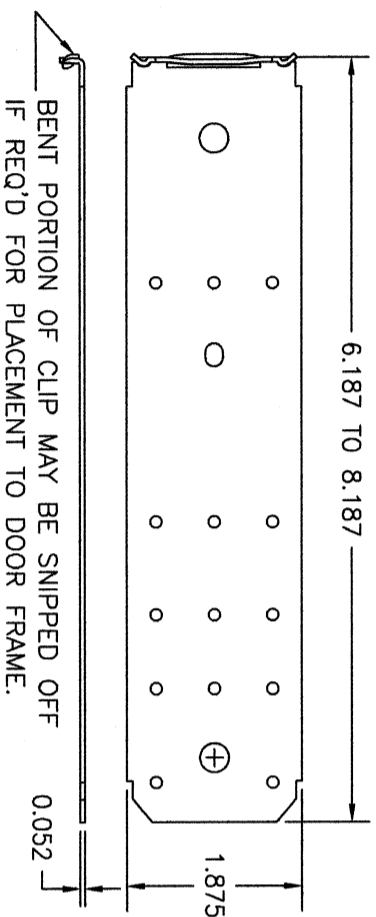
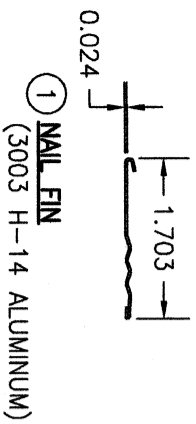
CERTIFICATION  
 WARREN W. SCHAEFER, P.E.  
 P.E. NO. 44135

DRAWING NO. 1853  
 REV. B  
 SHEET NO. 6 OF 7

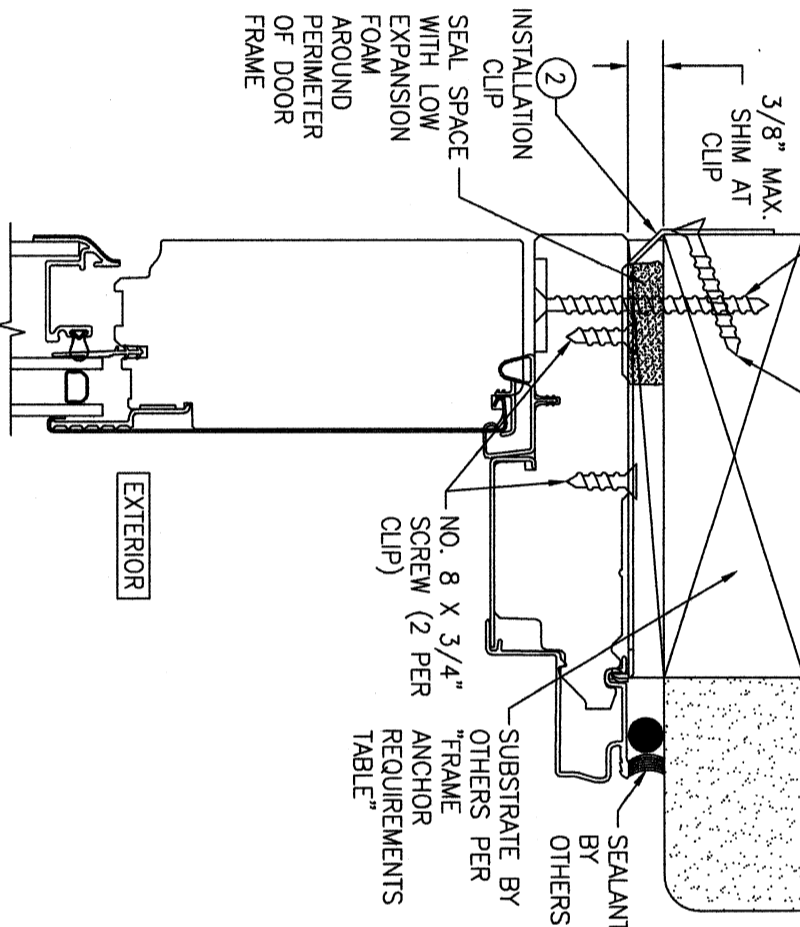
CONTINUOUS WOOD MEMBER LESS IN THICKNESS THAN A 2X. BUCK TO BE MIN. 4 3/4" DEEP (NOT REQUIRED WHEN SHIM SPACE IS WITHIN ALLOWABLE DIMENSIONS SHOWN IN SECTIONS).



**OPTIONAL DIRECT MOUNT DETAIL TO SUBSTRATE WITH SPACER**  
 (HEAD SECTION SHOWN; SILL & SIDES ARE INSTALLED THE SAME)  
 (FOR DETAIL NOT SHOWN, SEE OTHER SECTIONS)  
 (OPERABLE DOOR SHOWN, FIXED PANEL DOORS ALSO APPLY)

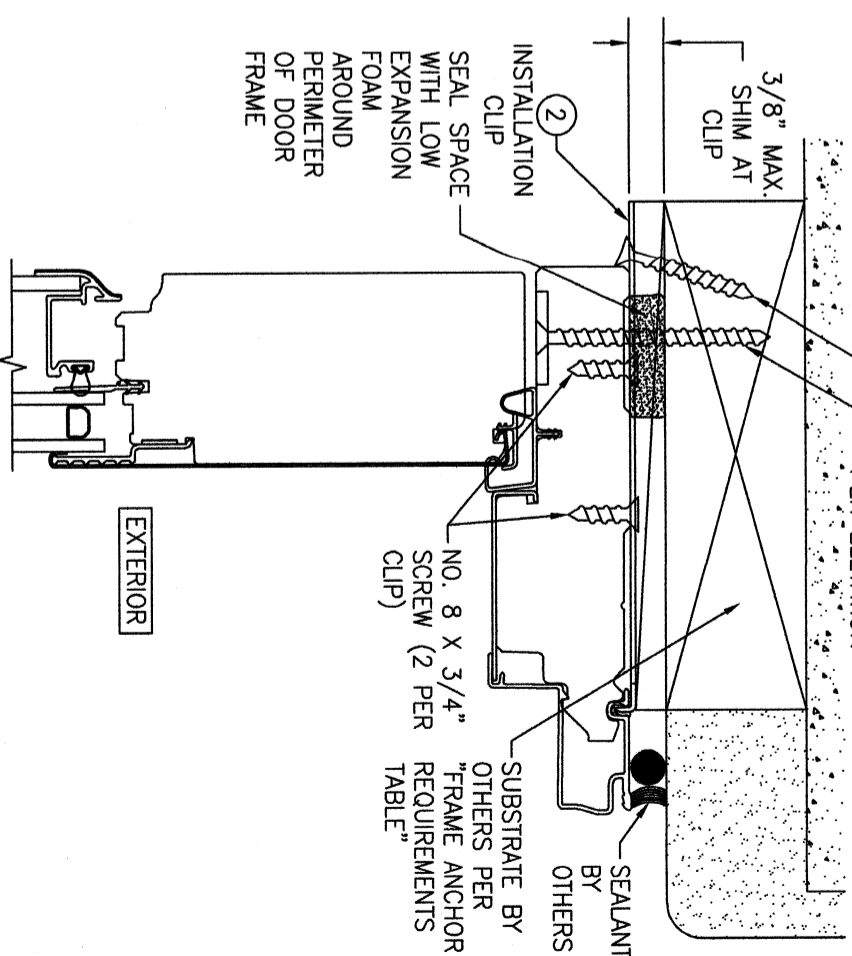


INSTALLATION CLIP SCREW PER "FRAME ANCHOR REQUIREMENTS TABLE" (2 PER CLIP). ANGLE SCREW 20-30° WHEN INTO WOOD SUBSTRATE.



**STANDARD INSTALLATION CLIP DETAIL**  
 (HEAD SECTION SHOWN; SIDES ARE INSTALLED THE SAME)  
 (FOR DETAIL NOT SHOWN, SEE OTHER SECTIONS)  
 (OPERABLE DOOR SHOWN, FIXED PANEL DOORS ALSO APPLY)  
 (INSTALLATION CLIPS ARE NOT APPLICABLE AT SILL)

INSTALLATION CLIP SCREW PER "FRAME ANCHOR REQUIREMENTS TABLE" (2 PER CLIP ANGLED 15 TO 20 DEGREES IF NECESSARY TO MEET EDGE DISTANCE REQUIREMENTS)



**ALTERNATE INSTALLATION CLIP DETAIL**  
 (HEAD SECTION SHOWN; SIDES ARE INSTALLED THE SAME)  
 (FOR DETAIL NOT SHOWN, SEE OTHER SECTIONS)  
 (OPERABLE DOOR SHOWN, FIXED PANEL DOORS ALSO APPLY)  
 (INSTALLATION CLIPS ARE NOT APPLICABLE AT SILL)

NO.	REVISION	DESCRIPTION	BY	DATE
1-2				

DRAWN BY: W.M.M.  
 CHECKED BY: W.M.S.  
 DATE: 03/04/13

DRAWING TITLE: LIFESTYLE WITH HGP SERIES MODEL 2 NON-IMPACT CLAD IN-SWING DOOR

CONSULTANTS: W. W. SCHAEFER ENGINEERING & CONSULTING, P.A.  
 26376 NADIR ROAD; UNIT 309  
 PUNTA GORDA, FL 33983  
 PHONE: 561-744-3424

MANUFACTURER: PELLA CORPORATION  
 102 MAIN STREET  
 PELLA, IA 50219  
 641-621-1000



CERTIFICATION

WARREN W. SCHAEFER, P.E.  
 P.E. NO. 44135

DRAWING NO.: 1853  
 SHEET NO.: 7 OF 7